



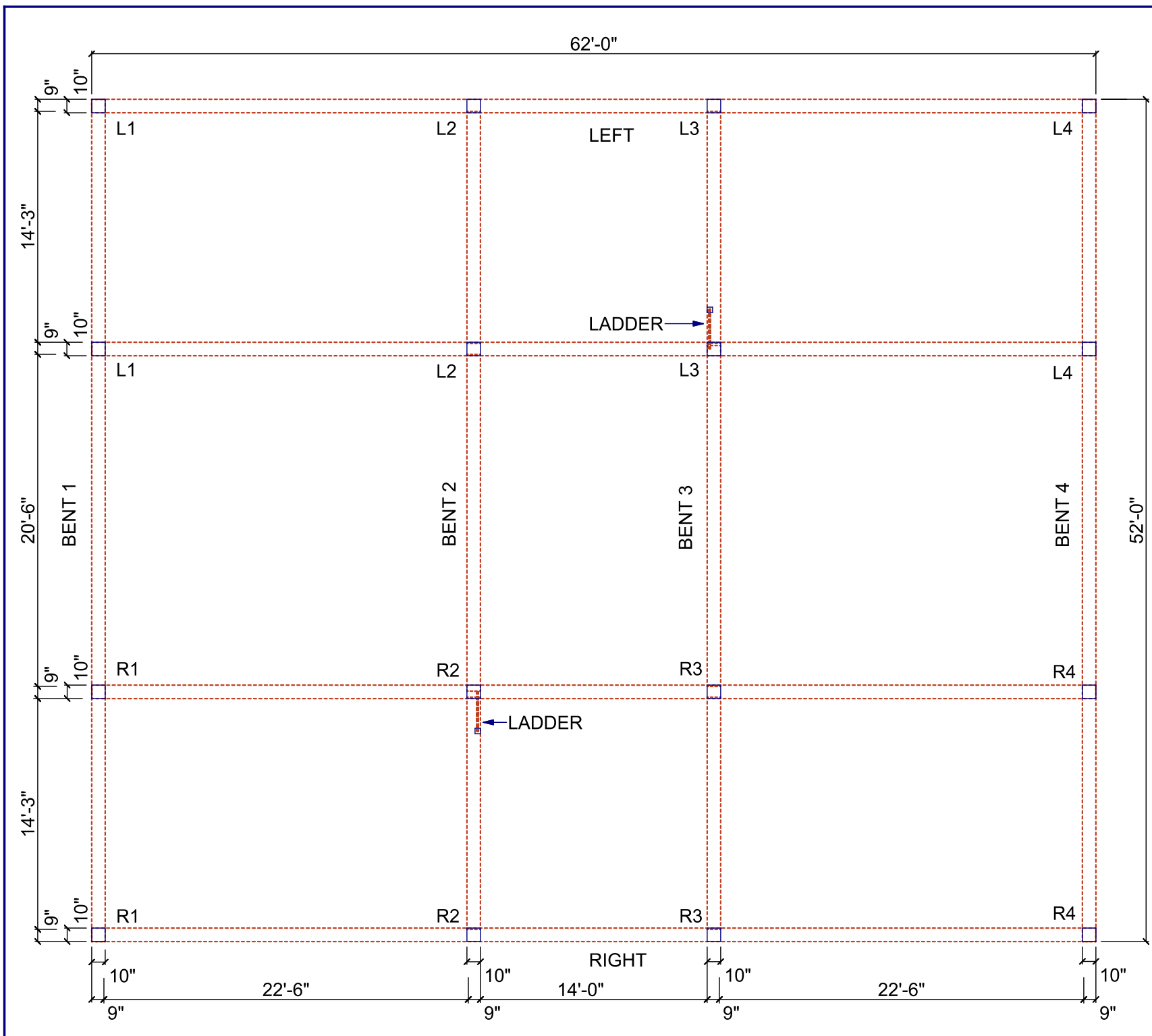
[Click here to view larger images on our website.](#)

Glenelg: Hand Hewn Barn Frame

An excellent high post, softwood frame, this barn was built in the late 1800's by the James Brodie and Sons timber framing company. This large frame has sidewalls measuring 19'9 to the plate. The interior has large open spaces with the biggest space being 24' X 52'. Presently under cover and ready to ship, it is tagged and blue-prints are available.

Barn ID:	Glenelg
Size:	52' x 62'
Vintage:	1890
Condition:	Excellent

A 3D model is available on request.



DESIGNER INFORMATION:

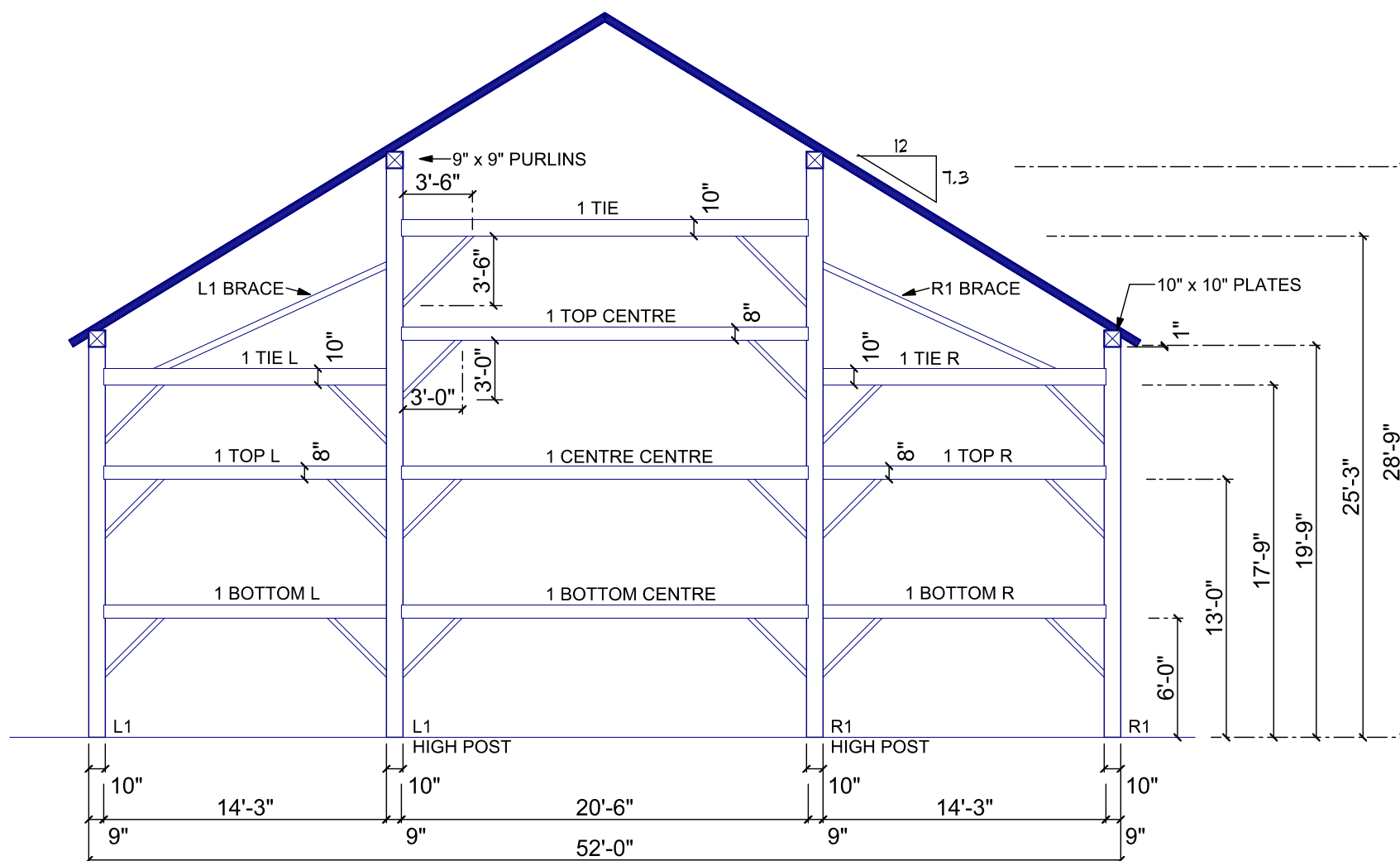
Duane Bauman BCIN 28073
Ph: 519-335-6398
e-mail: duane@cyg.net

CONTACT:

ERIC VERSTEEG
CIRCLE ROCK Inc.
1-519-357-8998 mobile
sales@circlerockinc.com
www.circlerockinc.com

PROJECT:

GLENELG Twp.
RE-CLAIMED FRAME
HAND-HEWN TIMBER
52'-0" x 62'-0"



BENT 1

ALL POSTS ARE 10" x 10" FRAMED AT 9"
BRACES ARE 36" UNLESS SHOWN OTHERWISE
ALL TIES ARE 10" x 10"
ALL GIRTS ARE 6" WIDE x 8" HIGH
PLATES ARE 10" x 10"

DRAWN BY: Duane Bauman

SCALE: 1/8" = 1'-0"

DATE: January 11, 2010

REVISED

All timber shall be in sound condition.
This design is subject to engineering
and any authority having jurisdiction
on the location of construction.

Dimensions may vary slightly because
of hand-hewn timbers. Up to two inches
of tolerance should be allowed.

TITLE:

BENT 1

SHEET No.:
2 OF 8

DESIGNER INFORMATION:

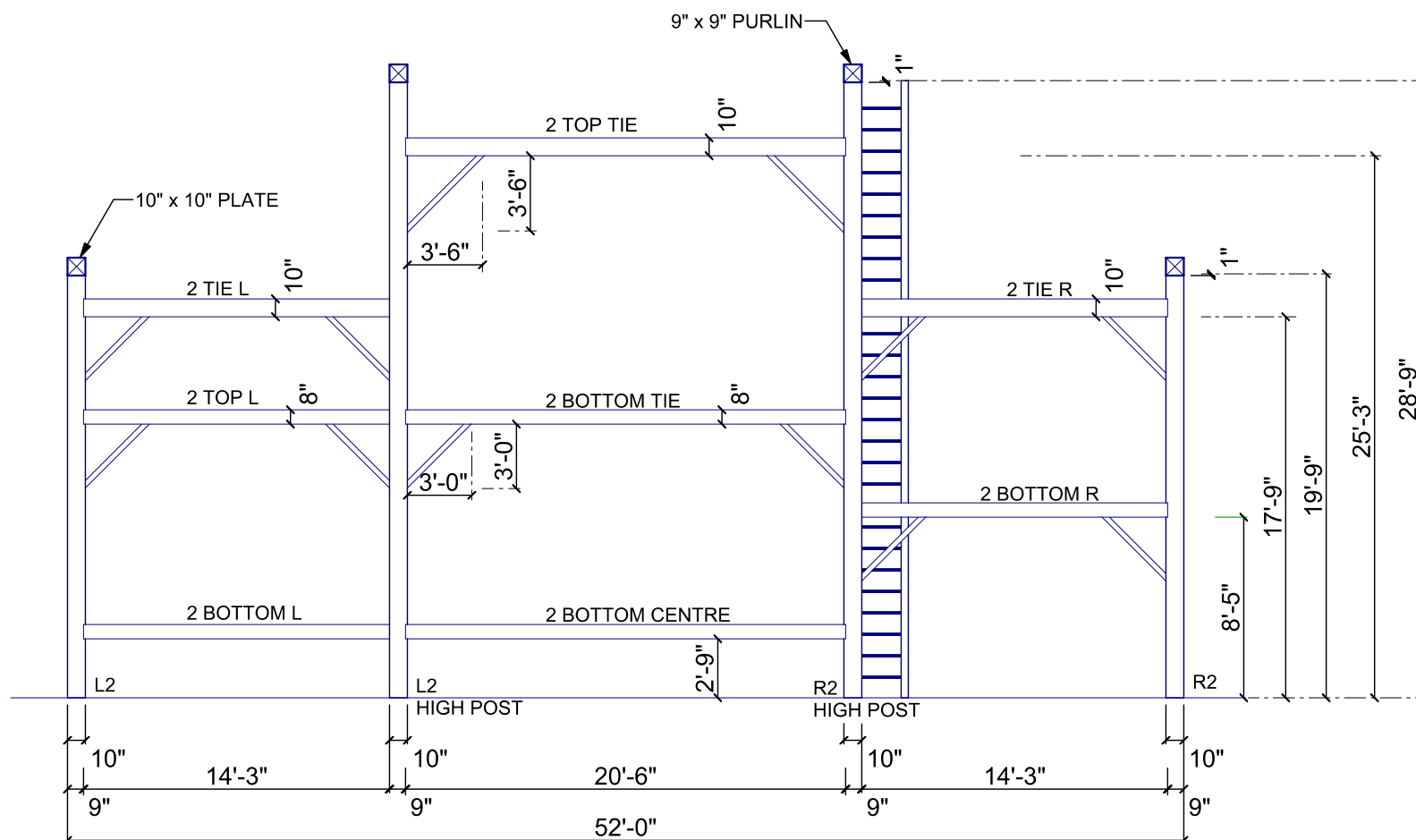
Duane Bauman BCIN 28073
Ph: 519-335-6398
e-mail: duane@cyg.net

CONTACT:

ERIC VERSTEEG
CIRCLE ROCK Inc.
1-519-357-8998 mobile
sales@circlerockinc.com
www.circlerockinc.com

PROJECT:

GLENELG Twp.
RE-CLAIMED FRAME
HAND-HEWN TIMBER
52'-0" x 62'-0"



BENT 2

ALL POSTS ARE 10" x 10" FRAMED AT 9"
BRACES ARE 36" UNLESS SHOWN OTHERWISE
ALL TIES ARE 10" x 10"
ALL GIRTS ARE 6" WIDE x 8" HIGH
PLATES ARE 10" x 10"

DRAWN BY: Duane Bauman

SCALE: 1/8" = 1'-0"

DATE: January 11, 2010

REVISED

All timber shall be in sound condition.
This design is subject to engineering
and any authority having jurisdiction
on the location of construction.

Dimensions may vary slightly because
of hand-hewn timbers. Up to two inches
of tolerance should be allowed.

TITLE:

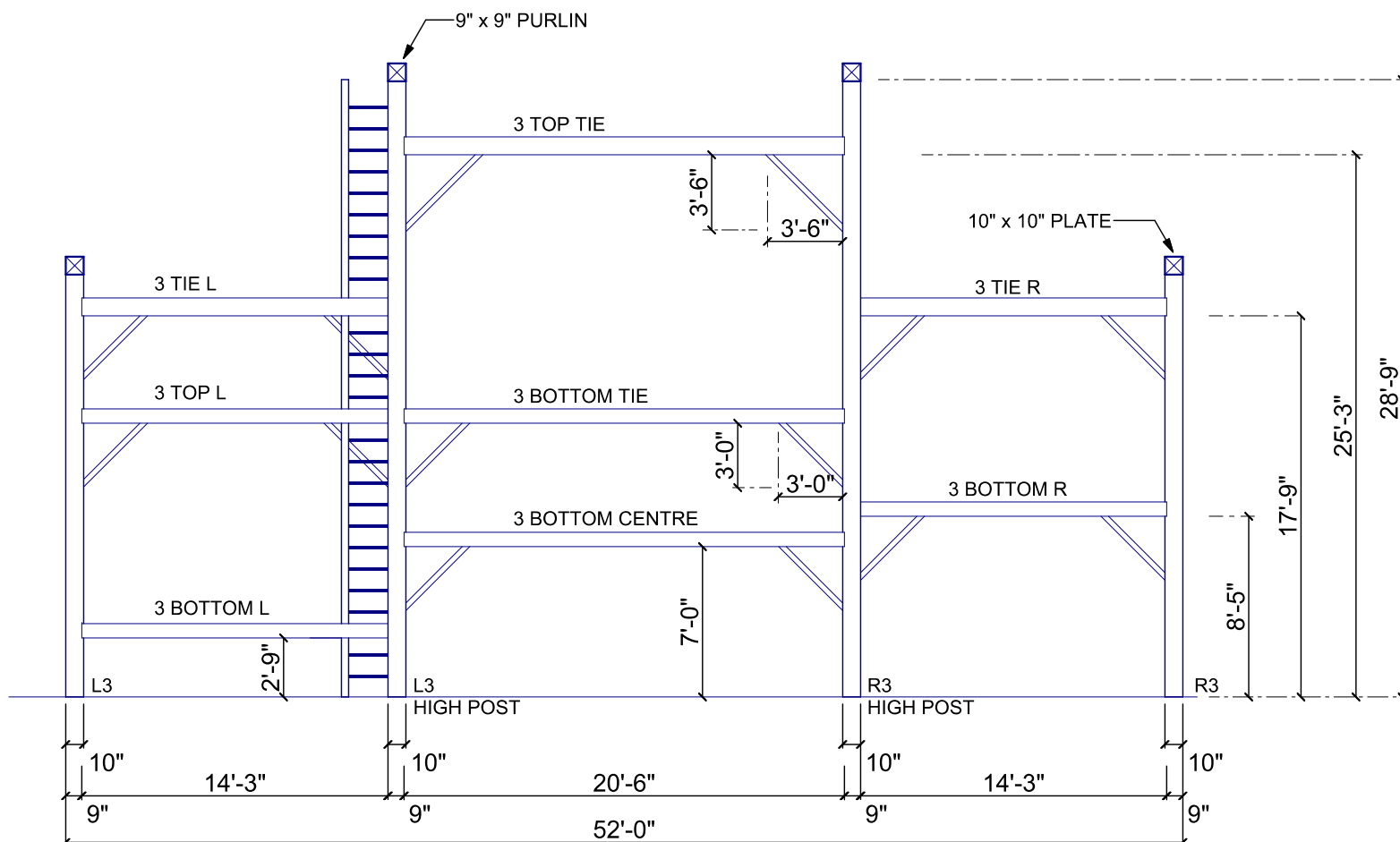
BENT 2

SHEET No.:
3 OF 8

DESIGNER INFORMATION:
Duane Bauman BCIN 28073
Ph: 519-335-6396
e-mail: duane@cyg.net

CONTACT:
ERIC VERSTEEG
CIRCLE ROCK Inc.
1-519-357-8998 mobile
sales@circlerockinc.com
www.circlerockinc.com

PROJECT:
GLENELG Twp.
RE-CLAIMED FRAME
HAND-HEWN TIMBER
52'-0" x 62'-0"



BENT 3

ALL POSTS ARE 10" x 10" FRAMED AT 9"
BRACES ARE 36" UNLESS SHOWN OTHERWISE
ALL TIES ARE 10" x 10"
ALL GIRTS ARE 6" WIDE x 8" HIGH
PLATES ARE 10" x 10"

DRAWN BY: Duane Bauman
SCALE: 1/8" = 1'-0"
DATE: January 11, 2010
REVISED

All timber shall be in sound condition.
This design is subject to engineering
and any authority having jurisdiction
on the location of construction.

Dimensions may vary slightly because
of hand-hewn timbers. Up to two inches
of tolerance should be allowed.

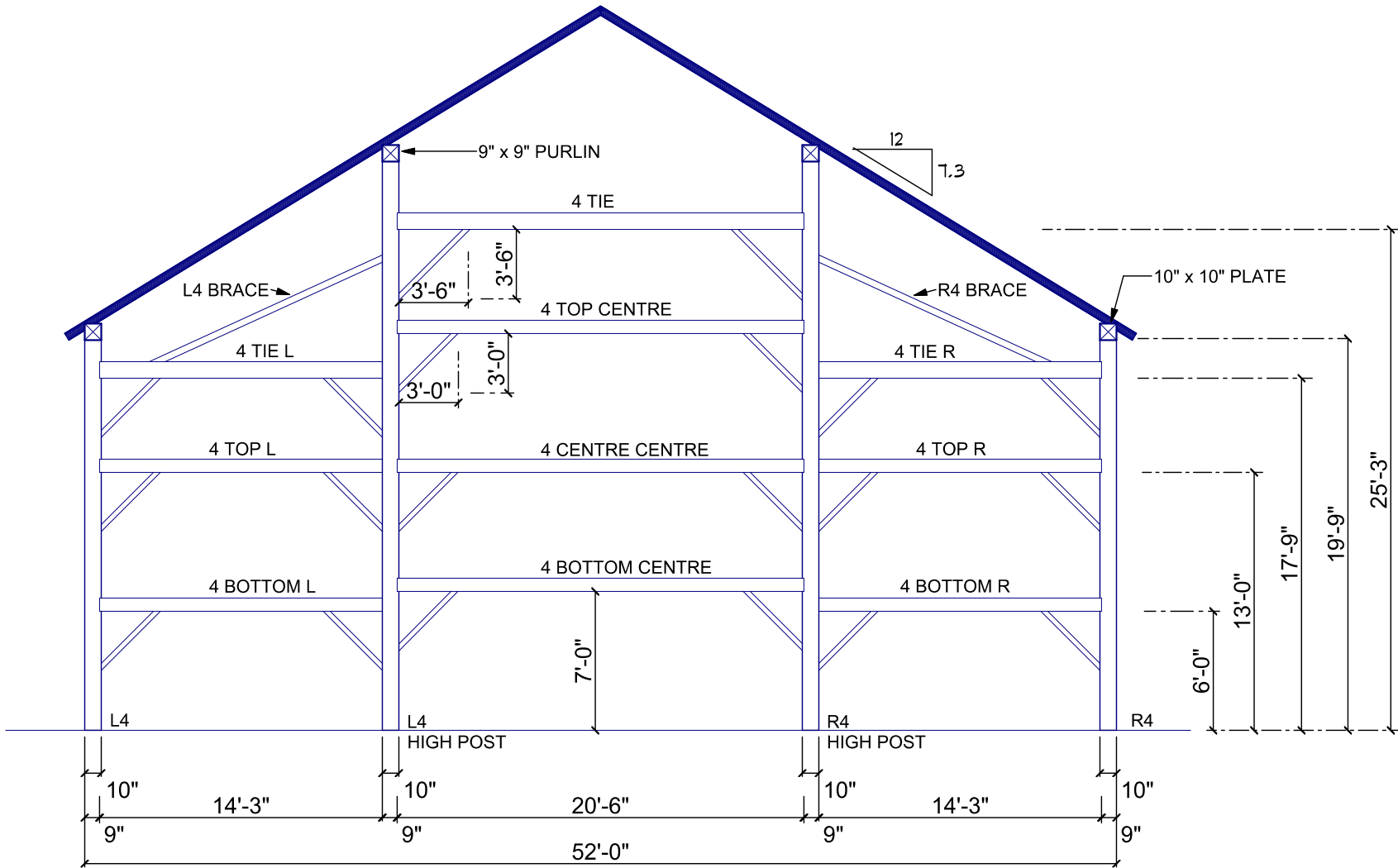
TITLE:
BENT 3

SHEET No.:
4 OF **8**

DESIGNER INFORMATION:
Duane Bauman BCIN 28073
Ph: 519-335-6398
e-mail: duane@cyg.net

CONTACT:
ERIC VERSTEEG
CIRCLE ROCK Inc.
1-519-357-8998 mobile
sales@circlerockinc.com
www.circlerockinc.com

PROJECT:
GLENELG Twp.
RE-CLAIMED FRAME
HAND-HEWN TIMBER
52'-0" x 62'-0"



BENT 4

ALL POSTS ARE 10" x 10" FRAMED AT 9"
BRACES ARE 36" UNLESS SHOWN OTHERWISE
ALL TIES ARE 10" x 10"
ALL GIRTS ARE 6" WIDE x 8" HIGH
PLATES ARE 10" x 10"

DRAWN BY: Duane Bauman

SCALE: 1/8" = 1'-0"

DATE: January 11, 2010

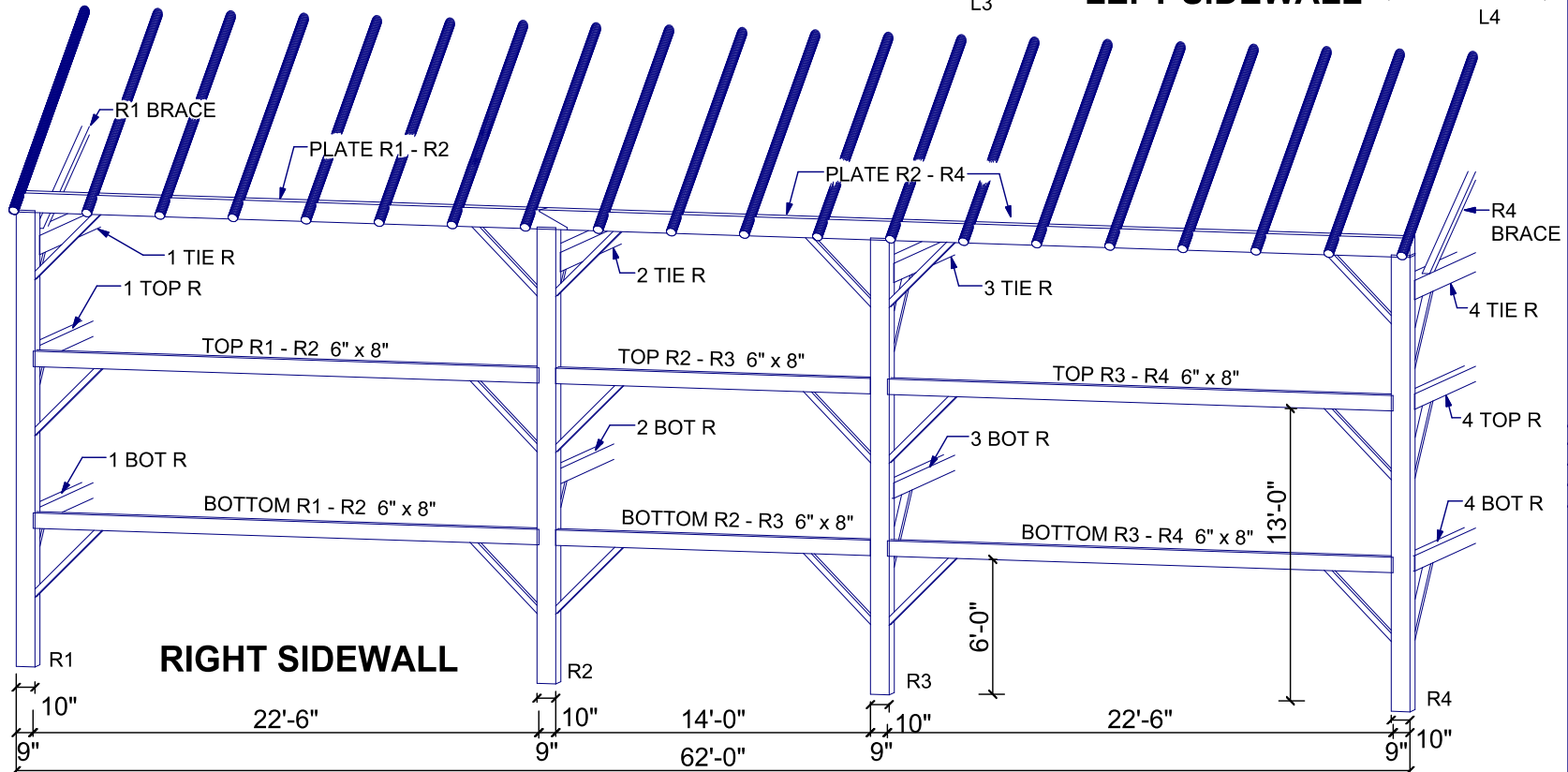
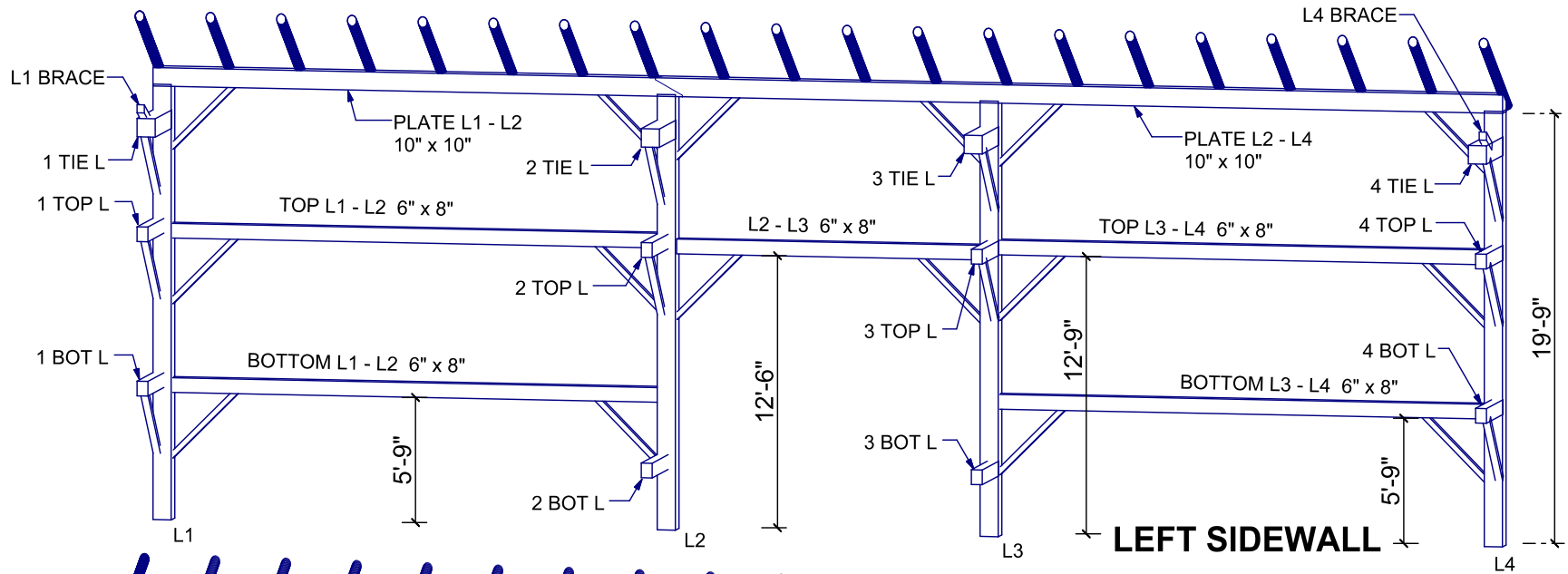
REVISED

All timber shall be in sound condition.
This design is subject to engineering
and any authority having jurisdiction
on the location of construction.

Dimensions may vary slightly because
of hand-hewn timbers. Up to two inches
of tolerance should be allowed.

TITLE:
BENT 4

SHEET No.:
5 OF **8**



DRAWN BY: Duane Bauman

SCALE: 1/8" = 1'-0"

DATE: January 11, 2010

REVISED

All timber shall be in sound condition. This design is subject to engineering and any authority having jurisdiction on the location of construction.

Dimensions may vary slightly because of hand-hewn timbers. Up to two inches of tolerance should be allowed.

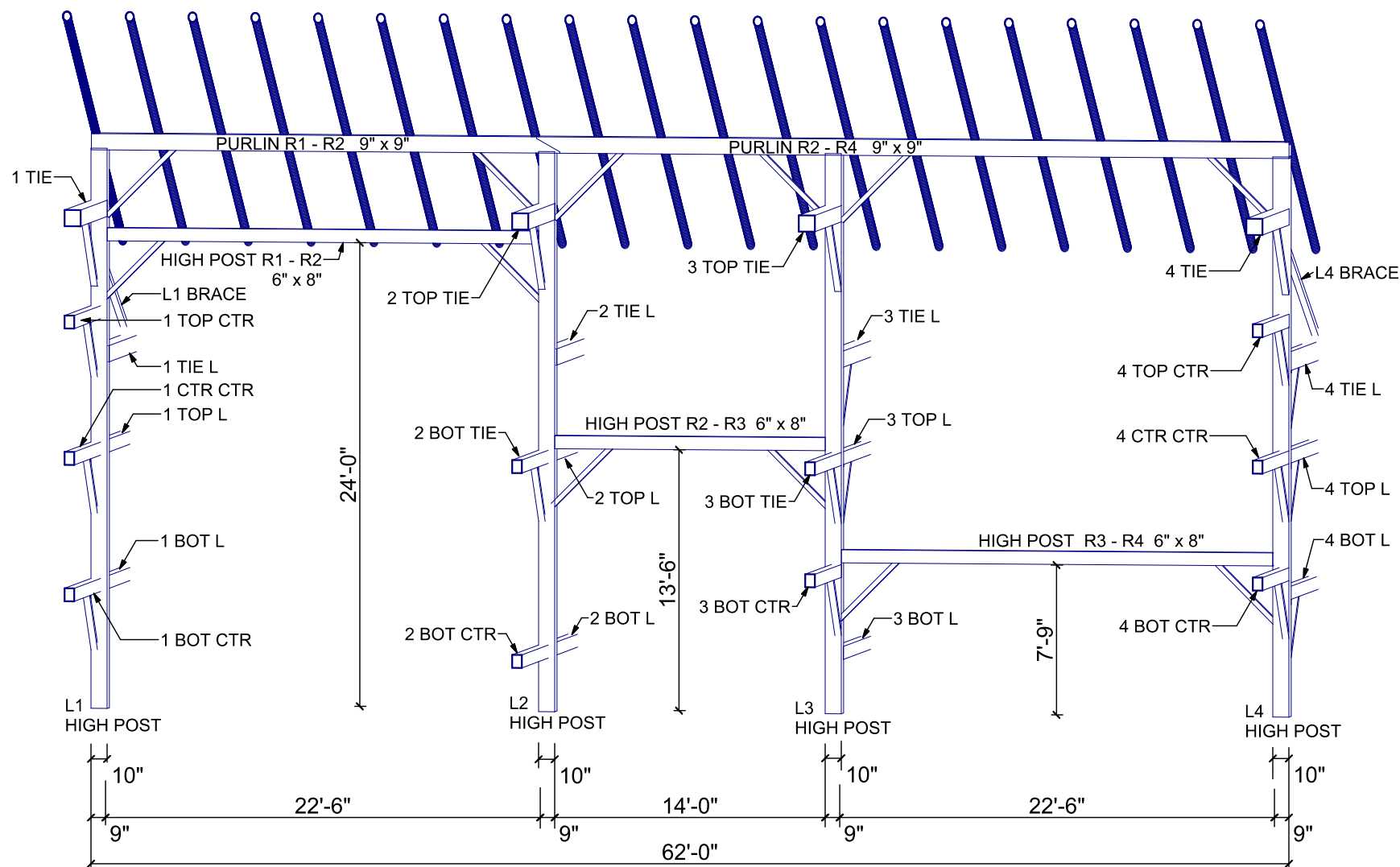
TITLE:
**RIGHT & LEFT
SIDE WALLS**

SHEET No.:
6 OF **8**

DESIGNER INFORMATION:
Duane Bauman BCIN 28073
Ph: 519-335-6398
e-mail: duane@cyg.net

CONTACT:
ERIC VERSTEEG
CIRCLE ROCK Inc.
1-519-357-8998 mobile
sales@circlerockinc.com
www.circlerockinc.com

PROJECT:
GLENELG Twp.
RE-CLAIMED FRAME
HAND-HEWN TIMBER
52'-0" x 62'-0"



DRAWN BY: Duane Bauman
SCALE: 1/8" = 1'-0"
DATE: January 11, 2010
REVISED

All timber shall be in sound condition.
This design is subject to engineering
and any authority having jurisdiction
on the location of construction.
Dimensions may vary slightly because
of hand-hewn timbers. Up to two inches
of tolerance should be allowed.

TITLE:
LEFT HIGH POST

DESIGNER INFORMATION:

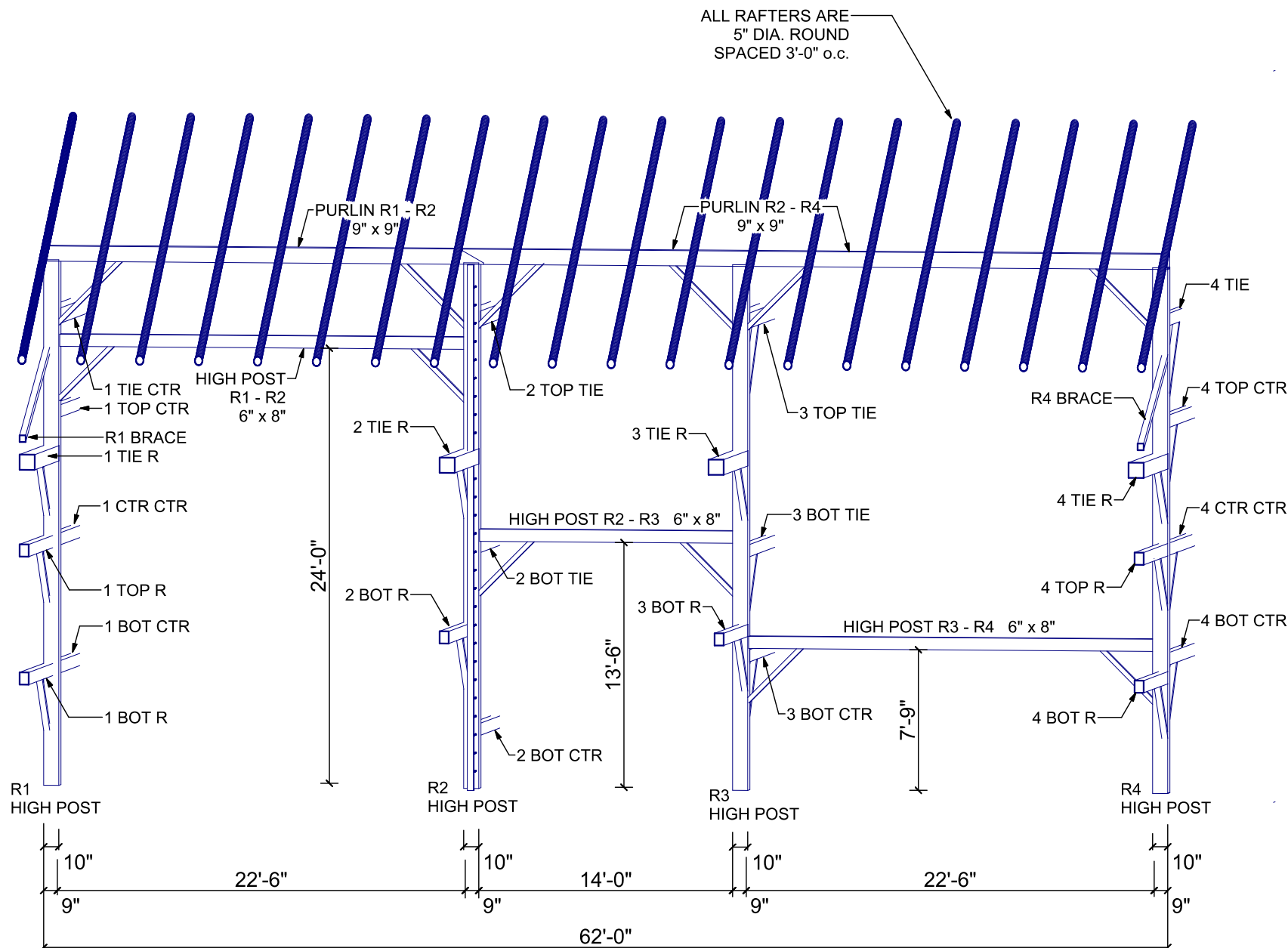
Duane Bauman BCIN 28073
Ph: 519-335-6398
e-mail: duane@cyg.net

CONTACT:

ERIC VERSTEEG
CIRCLE ROCK Inc.
1-519-357-8998 mobile
sales@circlerockinc.com
www.circlerockinc.com

PROJECT:

GLENELG Twp.
RE-CLAIMED FRAME
HAND-HEWN TIMBER
52'-0" x 62'-0"



DRAWN BY: Duane Bauman

SCALE: 1/8" = 1'-0"

DATE: January 11, 2010

REVISED

All timber shall be in sound condition.
This design is subject to engineering
and any authority having jurisdiction
on the location of construction.

Dimensions may vary slightly because
of hand-hewn timbers. Up to two inches
of tolerance should be allowed.

TITLE:

RIGHT HIGH POST

SHEET No.: 8 OF 8