



[Click here to view larger images on our website.](#)

Greenock Township: Hand Hewn Barn Frame

This hand-hewn pine frame is very well preserved. The plates and purlins run the full length of the barn without a splice, measuring 60' in length! The timbers are very heavily dimensioned. The posts and tie beams are 12" x 12" and the swing beam measures 20" in the centre. This frame was made higher and wider at one point. The entire south wall was moved out 14'. The original 36' x 60' frame will fit back together perfectly, returning the roof line to it's original position.

Barn ID: Greenock
Size: 36' x 60'
Vintage: Mid to Late 1800's
Condition: Excellent

A 3D model is available on request.



44681 Gough Road, RR 2 Gorrie, ON N0G 1X0

DESIGNER INFORMATION:

Duane Bauman BCIN 28073
Ph: 519-335-6398
e-mail: duane@cyg.net

CONTACT:

ERIC VERSTEEG
CIRCLE ROCK Inc.
1-519-357-8998 mobile
sales@circlerockinc.com
www.circlerockinc.com

PROJECT:

GREENOCK Twp.
RE-CLAIMED FRAME
HAND-HEWN TIMBER
36'-0" x 60'-0"

DRAWN BY: Duane Bauman

SCALE: 1/8" = 1'-0"

DATE: December 21, 2009

REVISED

All timber shall be in sound condition.
This design is subject to engineering
and any authority having jurisdiction
on the location of construction.

Dimensions may vary slightly because
of hand-hewn timbers. Up to two inches
of tolerance should be allowed.

TITLE:

FLOOR PLAN

SHEET No.:

1 OF 5

LEFT SIDE WALL

60'-3"

25'-4³/₄"

12'-1¹/₄"

5'-0"

13'-1¹/₂"

18'-0¹/₂"

18'-0¹/₂"

BENT 1

34'-3"

LADDER

BENT 2

LADDER

BENT 3

BENT 4

BENT 5

36'-1"

13'-2"

27'-2¹/₂"

12'-0¹/₂"

6'-0"

15'-0"

60'-3"

RIGHT SIDE WALL

DESIGNER INFORMATION:

Duane Bauman BCIN 28073
Ph: 519-335-6398
e-mail: duane@cyg.net

CONTACT:

ERIC VERSTEEG
CIRCLE ROCK Inc.
1-519-357-8998 mobile
sales@circlerockinc.com
www.circlerockinc.com

PROJECT:

GREENOCK Twp.
RE-CLAIMED FRAME
HAND-HEWN TIMBER
36'-0" x 60'-0"

DRAWN BY: Duane Bauman

SCALE: 1/8" = 1'-0"

DATE: December 21, 2009

REVISED

All timber shall be in sound condition.
This design is subject to engineering
and any authority having jurisdiction
on the location of construction.

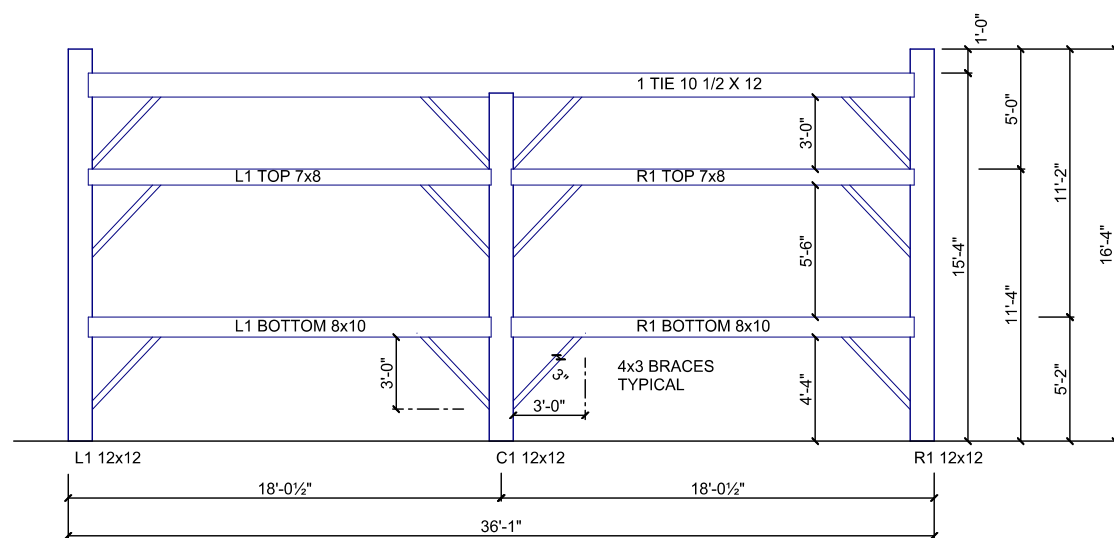
Dimensions may vary slightly because
of hand-hewn timbers. Up to two inches
of tolerance should be allowed.

TITLE:

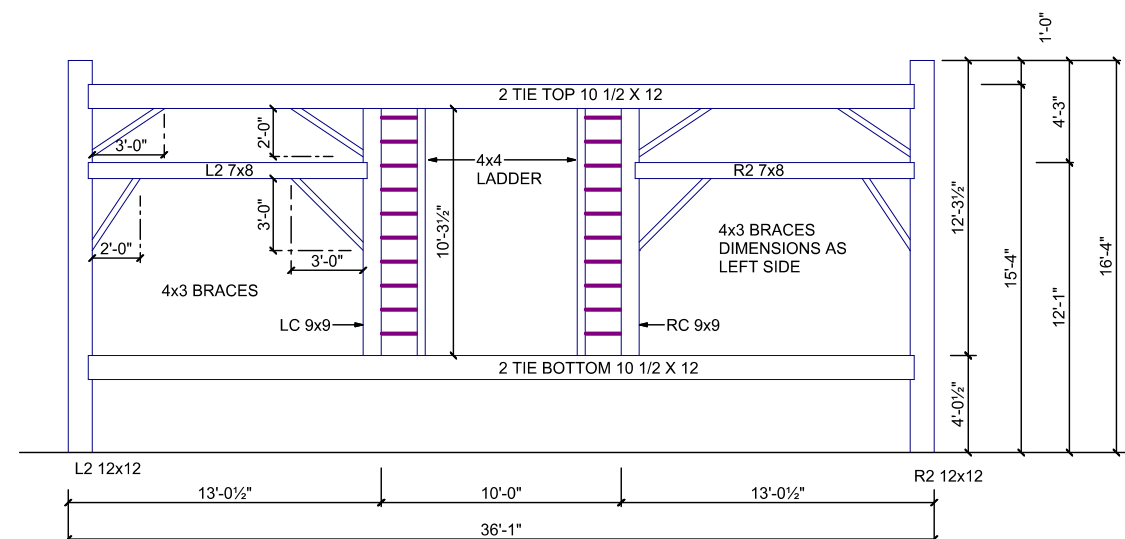
BENT 1 & 2

SHEET No.:

2 OF 5



BENT 1



BENT 2

DESIGNER INFORMATION:

Duane Bauman BCIN 28073
Ph: 519-335-6398
e-mail: duane@cyg.net

CONTACT:

ERIC VERSTEEG
CIRCLE ROCK Inc.
1-519-357-8998 mobile
sales@circlerockinc.com
www.circlerockinc.com

PROJECT:

GREENOCK Twp.
RE-CLAIMED FRAME
HAND-HEWN TIMBER
36'-0" x 60'-0"

DRAWN BY: Duane Bauman

SCALE: 1/8" = 1'-0"

DATE: December 21, 2009

REVISED

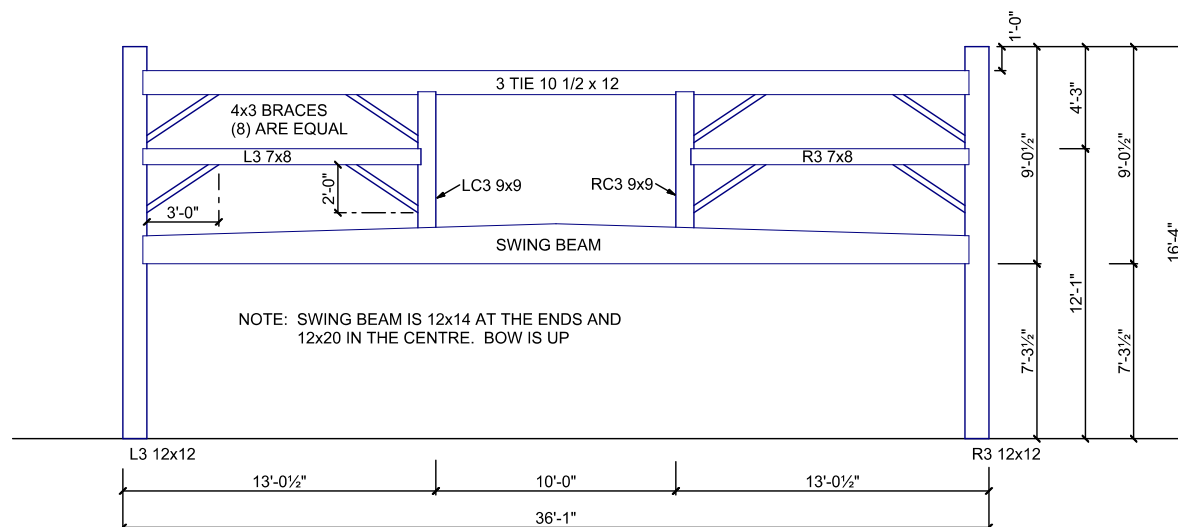
All timber shall be in sound condition.
This design is subject to engineering
and any authority having jurisdiction
on the location of construction.

Dimensions may vary slightly because
of hand-hewn timbers. Up to two inches
of tolerance should be allowed.

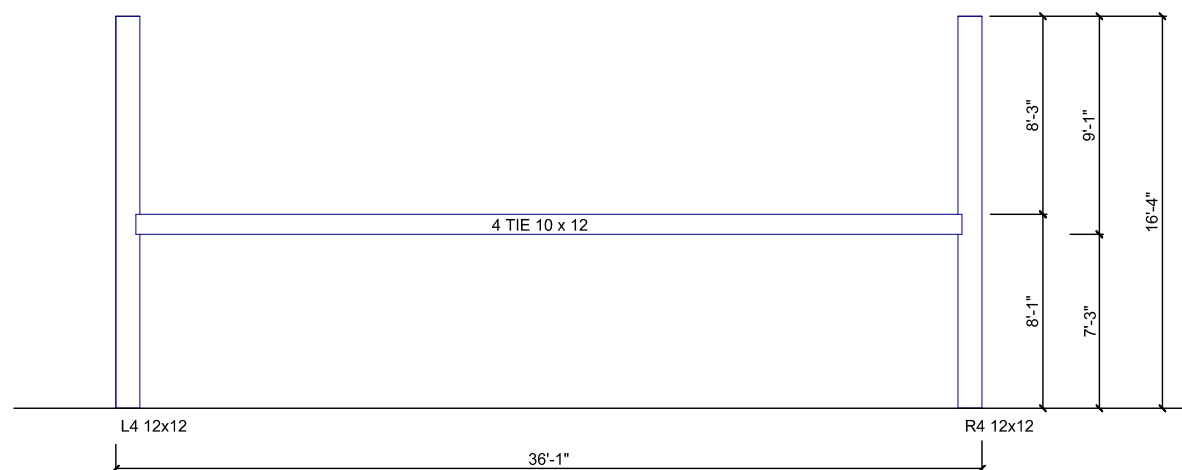
TITLE:

BENT 3 & 4

SHEET No.:
3 OF 5



BENT 3



BENT 4

DESIGNER INFORMATION:

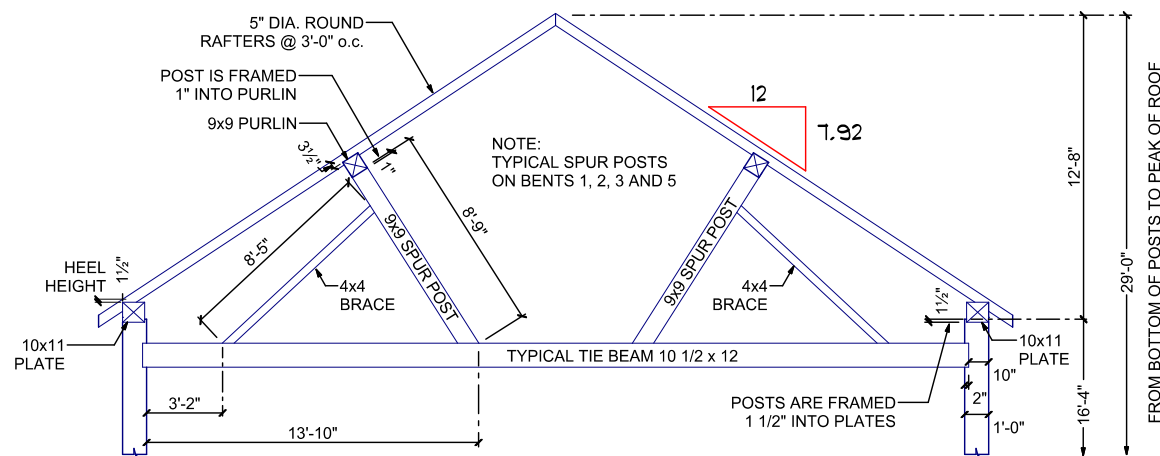
Duane Bauman BCIN 28073
Ph: 519-335-6398
e-mail: duane@cyg.net

CONTACT:

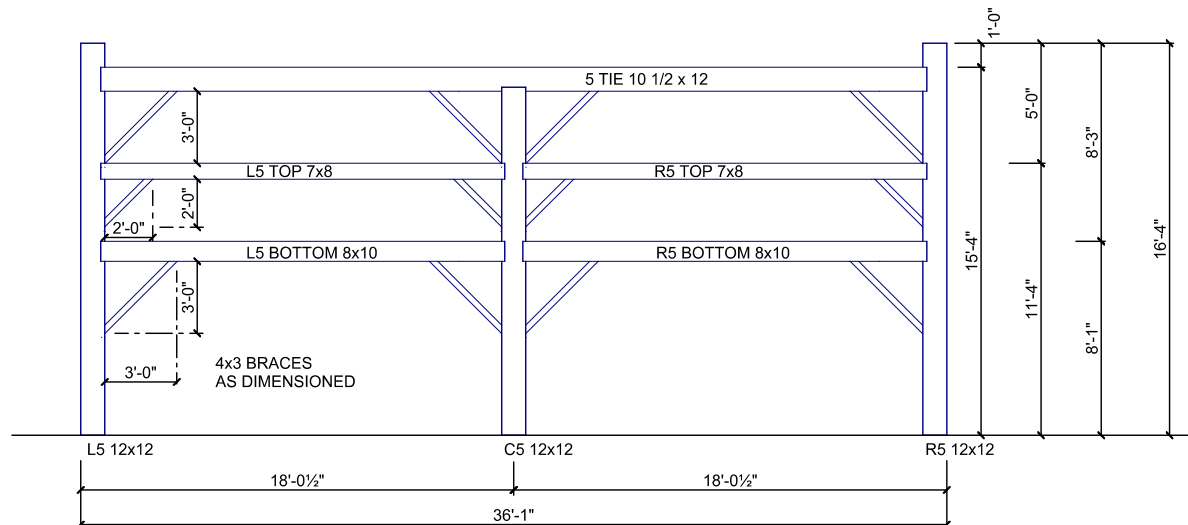
ERIC VERSTEEG
CIRCLE ROCK Inc.
1-519-357-8998 mobile
sales@circlerockinc.com
www.circlerockinc.com

PROJECT:

GREENOCK Twp.
RE-CLAIMED FRAME
HAND-HEWN TIMBER
36'-0" x 60'-0"



ROOF SYSTEM



BENT 5

DRAWN BY: Duane Bauman

SCALE: 1/8" = 1'-0"

DATE: December 21, 2009

REVISED

All timber shall be in sound condition. This design is subject to engineering and any authority having jurisdiction on the location of construction.

Dimensions may vary slightly because of hand-hewn timbers. Up to two inches of tolerance should be allowed.

TITLE:

ROOF SYSTEM
AND BENT 5

SHEET No.:

4 OF 5

DESIGNER INFORMATION:

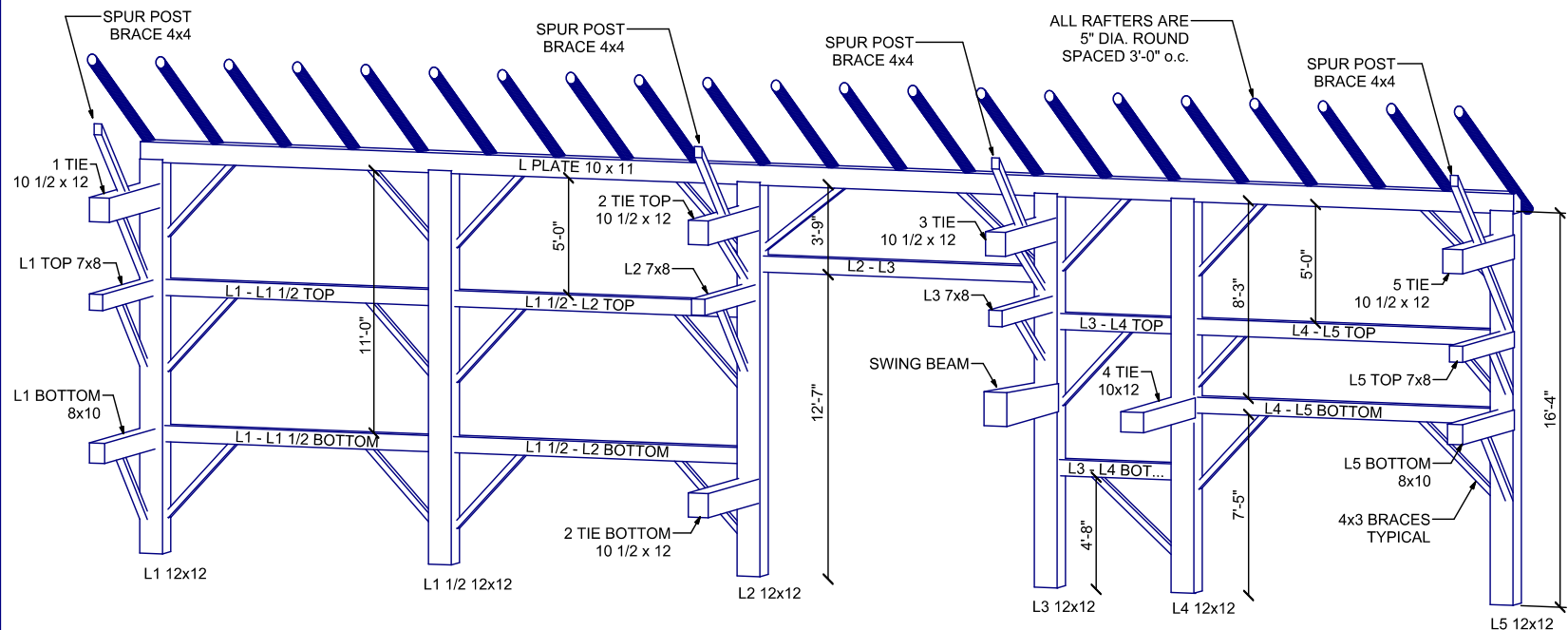
Duane Bauman BCIN 28073
Ph: 519-335-6398
e-mail: duane@cyg.net

CONTACT:

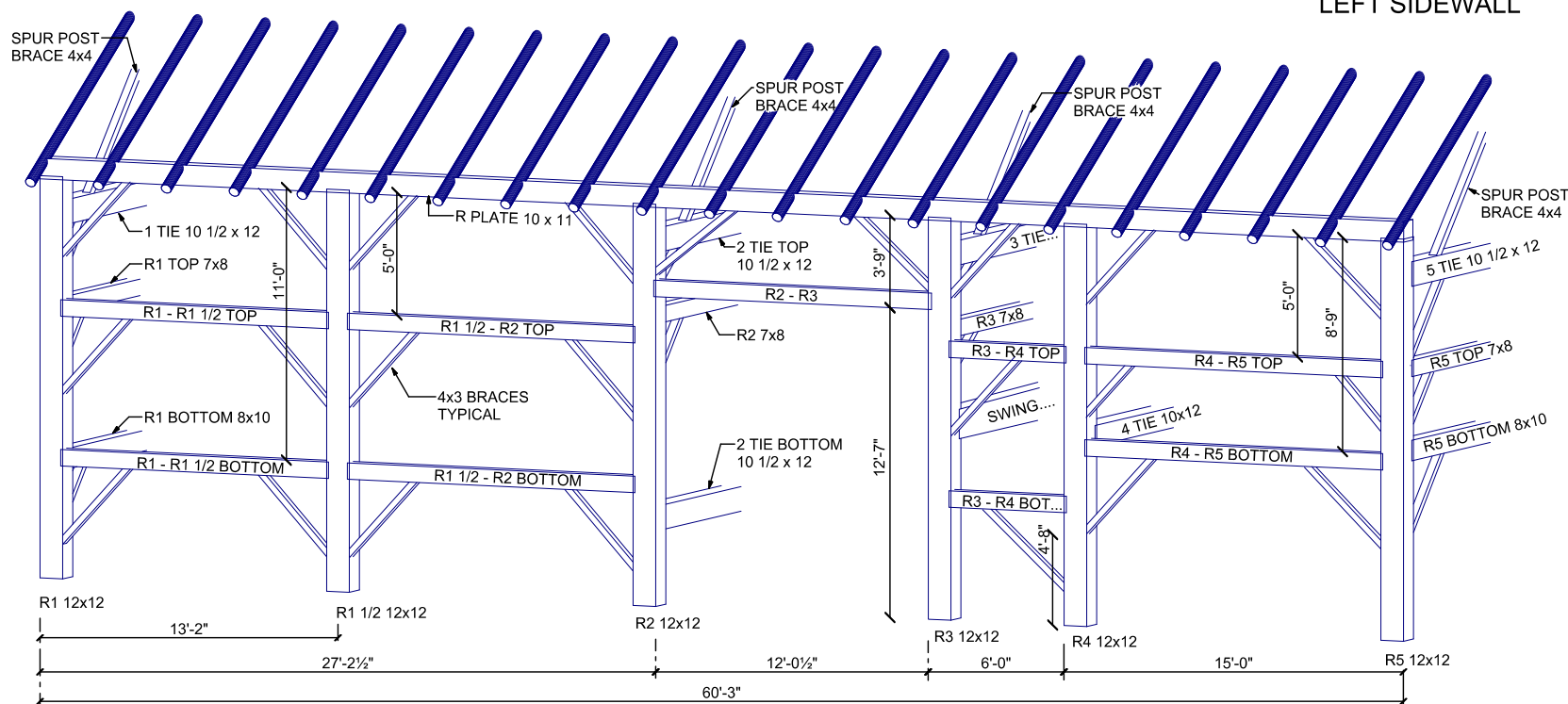
ERIC VERSTEEG
CIRCLE ROCK Inc.
1-519-357-8998 mobile
sales@circlerockinc.com
www.circlerockinc.com

PROJECT:

GREENOCK Twp.
RE-CLAIMED FRAME
HAND-HEWN TIMBER
36'-0" x 60'-0"



LEFT SIDEWALL



RIGHT SIDEWALL

DRAWN BY: Duane Bauman

SCALE: Not to Scale

DATE: December 21, 2009

REVISED

All timber shall be in sound condition. This design is subject to engineering and any authority having jurisdiction on the location of construction.

Dimensions may vary slightly because of hand-hewn timbers. Up to two inches of tolerance should be allowed.

TITLE:

LEFT & RIGHT
SIDEWALLS

SHEET No.:
5 OF 5